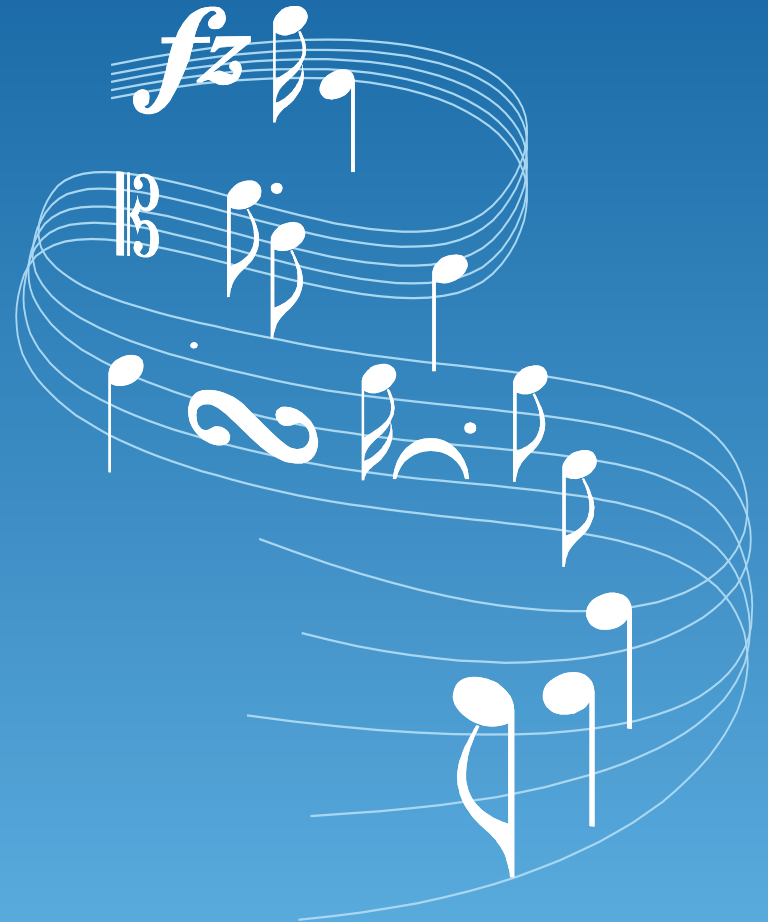


PERFORMING

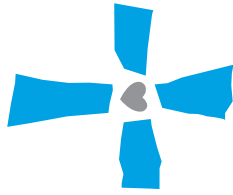
Arts

AT SAINT MARY OF THE ASSUMPTION



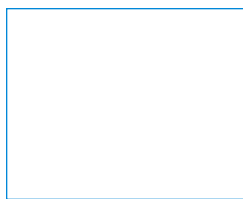
2008-2009

SUNDAY CONCERT SEASON



saint mary
of the assumption

SAINT MARY OF THE ASSUMPTION
CATHOLIC CHURCH
5502 York Road
Baltimore, MD 21212



Concert Calendar of Events

October 5, 2008

Theodore Feldmann, Organist

The American Guild of Organists has proclaimed the 2008-2009 concert season as the International Year of the Organ. It's a wonderful opportunity to celebrate the rebuilding of St. Mary's organ by the Peragallo Organ Company. Mr. Feldmann will perform classical works, including Bach's Toccata and Fugue in D minor, as well as several pieces composed by friends and mentors.

November 9, 2008

Michael L. Dennison, Bass

Uriah J. Moore, Pianist

Baltimore artists Michael Dennison and Uriah J. Moore will perform a stunning array of musical selections from the classics and sacred works to Broadway and beyond!

December 7, 2008

An Advent Concert of Lessons and Carols

The St. Mary of the Assumption Choir, Theodore Feldmann, Director and Organist, and Special Guest Artists

"The Nonesuch Trio"

A potpourri of traditional and contemporary Advent selections performed by the Choir and century-spanning mandolin music by "The Nonesuch Trio", featuring Chuck Levin, Jim Blanchard and Jeff Doll.

January 18, 2009*

The Murray/King Guitar Duo

Formed in 2000, the husband and wife guitar duo of Kathrin Murray and Troy King have performed to critical acclaim in New York, Washington, DC, Honolulu, Hawaii and Cheltenham, England. Both artists are highly recognized throughout the States, in Europe and Latin America. Together, they bring a strong musical rapport in their playing, performing an eclectic program including works by Brahms and Spanish composer Joaquin Turina.

*Snow date for this performance will be Sunday, January 25

March 22, 2009

"The Three Organists"

Paul Binko, Organ

Theodore Feldmann, Organ

Chapman Gonzalez, Organ

We continue our celebration of the Year of the Organ with past and present music directors of St. Mary coming together to perform an awe-inspiring array of organ masterworks. A concert not to be missed!

April 26, 2009

"From Russia with Love"

Anne Carter-Smith, Mezzo -Soprano

Ina Allen, Piano

Works by Rachmaninoff, Tchaikovsky and Borodin will be featured by Baltimore-born mezzo soprano and cantor Anne Carter-Smith, and Ina Allen, principal pianist for the Hopkins Symphony and Chamber Orchestras.

May 17, 2009

The Baltimore Mandolin Orchestra

Back by popular demand, it's the Baltimore Mandolin Orchestra. One of more than 25 active mandolin ensembles in the United States today, the group will present a program of various musical styles, from classics to popular, including trio and vocal performances.

All Concerts begin at 4:00 pm and are free and open to the public. "Meet and Greet" Receptions with the Artists and Lite Fare follow all concerts.

Ample Parking and Accessible Entry and Seating at the Church. For more information, call Ted Feldmann at 410.435.5900, or visit us on the Church web site at www.stmaryoftheassumption.org

Performing Arts at St. Mary begins its fourth concert season in 2008-2009. The series is made possible by the generous support of St. Mary of the Assumption Church and Choir, Waldinger Creative and by the contributions of its many attendees in the past four years.

"Performing Arts at St. Mary is a free concert series that provides musical education, enrichment and enjoyment to the community through the performances of professional area musicians".